



-
- Laboratory Biological Microscopes
 - Life – Science Microscopes
 - Analytical Instruments
 - Fluorescence Microscopes

-
- Stereo Zoom Microscopes
 - Inverted Tissue Culture Microscope
 - Digital Imaging Cameras
 - Image Analysis Softwares

DISSECTING MICROSCOPE

SPECIFICATIONS

Magnification	10x20x
Stand	Stable & Robust with round base
Body	Two hinged joint arm for moving the magnifying lens over the stage
Focusing	Focusing by rack and pinion Mechanism.
Stage	Square Stage with two clips for holding slides.
Eye-Pieces	10x and 20x



METZ-33



METZ-36

STUDENT MICROSCOPE

SPECIFICATIONS

Magnification	100x-450x
Stand	Robust and stable inclinable through 90°, Mechanical tube length 160mm.
Focusing	Separate knobs for coarse and fine motion.
Stage	Fixed square stage size 120 x 120 mm. with clips.
Illumination	Plano Concave mirror in fork mount replaceable by Sub stage microscope lamp.
Condenser	Sub stage Abbe filter holder N.A. 1.25 condenser with Iris diaphragm and swing out filter holder.
Nose Piece	Dust proof triple revolving nose piece with positive click stops.
Objectives	Achromatic 10x & 45x (SL).
Eye Pieces	W.F. 10x Anti Fungus Coated.

MEDICAL RESEARCH MICROSCOPE

SPECIFICATIONS

Magnification	100x – 1000x.
Stand	Robust and stable inclinable through 90°, Mechanical tube length 160mm.
Focusing	Separate knobs for coarse and fine motion.
Stage	Fixed square stage size 120 x 120 mm. with co-axial graduated Mechanical stage for X & Y movements up to 55mm to 75mm.
Illumination	Plano Concave mirror in fork mount replaceable by Sub stage microscope lamp.
Condenser	Sub stage Abbe filter holder N.A. 1.25 condenser with Iris diaphragm and swing out filter holder focusable by rack & pinion.
Nose Piece	Dust proof triple revolving nose piece with positive click stops.
Objectives	Achromatic 10x, 45x & 100x oil (SL).
Eye Pieces	W.F. 10x Anti Fungus Coated.



METZ-38

MONOCULAR RESEARCH MICROSCOPE

SPECIFICATIONS

Magnification	100x – 1000x.
Observation	Monocular tube 45° rotatable through 360°.
Stand	A rigid & heavy stand.
Focusing	Coarse and fine focusing by conveniently placed separate knobs 1 div. 0.002 mm.
Stage	Fixed square stage size 120 x 140 mm, with co-axial graduated Mechanical stage for X & Y movements up to 55mm to 75mm.
Illumination	The illuminator incorporated 3W LED lamp and has adjustable brightness.
Condenser	Sub stage Abbe filter holder N.A. 1.25 condenser with Iris diaphragm and swing out filter holder focusable by rack & pinion.
Nose Piece	Triple revolving nose piece with positive click stops.
Objectives	Achromatic 10x, 45x & 100x oil (SL).
Eye Pieces	W.F. 10x Anti Fungus Coated.



METZ – 777

BINOCULAR RESEARCH MICROSCOPE

SPECIFICATIONS

Magnification	50x – 1000x.
Observation	Binocular 45, 360° rotatable, with interpupillary and diopter adjustment.
Stand	A rigid & heavy stand.
Focusing	Coarse and fine focusing by conveniently placed separate knobs 1 div. 0.002 mm.
Stage	Horizontal Mechanical stage 120 x 140 mm. with fine vernier graduation. Designed with convenient co-axial adjustment for slide manipulation through 50 x 70 mm.
Illumination	The illuminator incorporated 3W LED lamp and has adjustable brightness.
Condenser	Sub stage Abbe filter holder N.A. 1.25 condenser with Iris diaphragm and swing out filter holder focusable by rack & pinion.
Nose Piece	Quadruple revolving nose piece with positive click stops.
Objectives	Achromatic 5x, 10x, 45x & 100x oil (SL).
Eye Pieces	W.F. 10x Anti Fungus Coated. (Paired) F.O.V.18 MM.



METZ – 778

TRINOCULAR RESEARCH MICROSCOPE



METZ - 779

SPECIFICATIONS

Magnification	50x – 1000x.
Observation	Trinocular 45, 360° rotatable, with interpupillary and diopter adjustment.
Stand	A rigid & heavy stand.
Focusing	Coarse and fine focusing by conveniently placed separate knobs 1 div. 0.002 mm.
Stage	Horizontal Mechanical stage 120 x 140 mm. with fine vernier graduation. Designed with convenient co-axial adjustment for slide manipulation through 50 x 70 mm.
Illumination	The illuminator incorporated 3W LED lamp and has adjustable brightness.
Condenser	Sub stage Abbe filter holder N.A. 1.25 condenser with Iris diaphragm and swing out filter holder focusable by rack & pinion.
Nose Piece	Quadruple revolving nose piece with positive click stops.
Objectives	Achromatic 5x, 10x, 45x & 100x oil (SL).
Eye Pieces	W.F. 10 x Anti Fungus Coated. (Paired) F.O.V.18 MM.

DIGITAL TRINOCULAR REASEARCH MICROSCOPE WITH USB DIGITAL CAMERA.

SPECIFICATIONS

Magnification	50x – 1000x.
Observation	Trinocular 45, 360° rotatable, with interpupillary and diopter adjustment.
Stand	A rigid & heavy stand.
Focusing	Coarse and fine focusing by conveniently placed separate knobs 1 div. 0.002 mm.
Stage	Horizontal Mechanical stage 120 x 140 mm. with fine vernier graduation. Designed with convenient co-axial adjustment for slide manipulation through 50 x 70 mm.
Illumination	The illuminator incorporated 3W LED lamp and has adjustable brightness.
Condenser	Sub stage Abbe filter holder N.A. 1.25 condenser with Iris diaphragm and swing out filter holder focusable by rack & pinion.
Nose Piece	Quadruple revolving nose piece with positive click stops.
Eye Pieces	W.F. 10x Anti Fungus Coated. (Paired) F.O.V.18 MM.
Digital Usb Camera	5.0 Megapixel Color CMOS sensor, Size 1/2", Pixel size 2.2x2.2 micron Resolution 2592x1944, P C interface, 30 bit color depth, exposure time 1 Microsecond to 2 seconds. High Image Transmission convenient to use any standard Microscope. Digital Camera can change image into Digital signal & send it to your P.C.



METZ - 779A

BINOCULAR RESEARCH MICROSCOPE

SPECIFICATIONS

Magnification	40x to 1000x
Observation	Binocular 45, 360° rotatable, with interpupillary and diopter adjustment.
Stand	Sturdy and Durable pressure Die cast Aluminium stand.
Stage	Co-axial low drive double plate mechanism system travel on ball bearing guide ways.
Focusing system	Co-axial coarse & fine mechanism system with ball bearing guide ways
Illumination	The illuminator incorporated 3W LED lamp and has adjustable brightness.
Quadruple Nose Piece	A precision mechanism ensures the accuracy and optical alignment of the system
Sub- Stage Condenser	Abbe type N.A. 1.25 with iris diaphragm for resolution and contrast control
DIN-SP Objectives	4x, 10x, 40x (SL) & 100x Oil (SL). Anti fungal & infinity corrected.
Eye Pieces	10x paired. Extra wide field, Anti fungal & Anti reflected.



METZ - 5000 BM

TRINOCULAR RESEARCH MICROSCOPE

SPECIFICATIONS

Magnification	40x to 1000x
Observation	Trinocular 45, 360° rotatable, with interpupillary and diopter adjustment
Stand	Sturdy and Durable pressure Die cast Aluminium stand.
Stage	Co-axial low drive double plate mechanism system travel on ball bearing guide ways.
Focusing system	Co-axial coarse & fine mechanism system with ball bearing guide ways
Illumination	The illuminator incorporated 3W LED lamp and has adjustable brightness.
Quadruple Nose Piece	A precision mechanism ensures the accuracy and optical alignment of the system.
Sub- Stage Condenser	Abbe type N.A. 1.25 with iris diaphragm for resolution and contrast control.
DIN-SP Objectives	4x, 10x, 40x (SL) & 100x Oil (SL). Anti fungal & infinity corrected.
Eye Pieces	10x paired. Extra wide field, Anti fungal & Anti reflected.



METZ - 5000 TM

TRINOCULAR DIGITAL RESEARCH MICROSCOPE WITH USB DIGITAL CAMERA.

SPECIFICATIONS

Magnification	40x to 1000x
Observation	Trinocular 45, 360° rotatable, with interpupillary and diopter adjustment.
Stand	Sturdy and Durable pressure Die cast Aluminium stand
Stage	Co-axial low drive double plate mechanism system travel on ball bearing guide ways.
Focusing system	Co-axial coarse & fine mechanism system with ball bearing guide ways
Illumination	The illuminator incorporated 3W LED lamp and has adjustable brightness.
Quadruple Nose Piece	A precision mechanism ensures the accuracy and optical alignment of the system
Sub- Stage Condenser	Abbe type N.A. 1.25 with iris diaphragm for resolution and contrast control
DIN-SP Objectives	4x, 10x, 40x (SL) & 100x Oil (SL). Anti fungal & infinity corrected.
Eye Pieces	10x paired. Extra wide field, Anti fungal & Anti reflected.
USB Digital	3.0 Megapixel Color CMOS sensor, Size 1/2", Pixel size 3.2x3.2 micron Resolution 2048x1536, PC interface, 30 bit color depth exposure time 1 Microsecond to 2 seconds. High Image Transmission convenient to use any standard Microscope. Digital Camera can change image into Digital signal & send it to your PC.



METZ - 5000 DTM

BINOCULAR RESEARCH MICROSCOPE

SPECIFICATIONS

Magnification	40x to 1000x
Observation	Seidentopf Binocular Head inclined 30° rotatable at 360° and diopter adjustment ring on ocular tube (+/-5) with interpupillary distance from 48mm to 75mm.
Eye Pieces	(Anti fungus coated) 10x (paired) F.O. V 20mm.
Objectives	(Anti Mold and Anti fungal coated). S Plan Achromatic 4x, 10x, 40x (S.L.) & 100x Oil (S.L.)
Mechanical	Co-axial Focusing System. Pre Focusing Lever & Tension Adjustment Ring. Reverse angle quadruple nosepiece revolves on ball bearing. Double plate mechanical stage size 140mm X 132mm having low positioned co-axial controls. Coarse stroke 37.7mm/rotation, fine division 0.002mm, Cross travel 78mm X 54mm.
Sub - Stage Condenser	Abbe Condenser N.A. 1.25 with adjustable iris diaphragm
Illumination System	The illuminator incorporated 3W LED lamp and has adjustable brightness



**METZ - 5000 BM
(SUPREME)**

TRINOCULAR RESEARCH MICROSCOPE

SPECIFICATIONS



METZ – 5000 TM
(SUPREME)

Magnification	40x to 1000x
Observation	Seidentopf Trinocular Head inclined 30° rotatable at 360 and diopter adjustment ring on ocular tube (+/-5) with interpupillary distance from 48mm to 75mm.
Eye Pieces	(Anti fungus coated) 10x (paired) F.O. V 20mm.
Objectives	(Anti Mold and Anti fungal coated). S Plan Achromatic 4x, 10x, 40x (S.L.) & 100x Oil (S.L.)
Mechanical	Co-axial Focusing System. Pre Focusing Lever & Tension Adjustment Ring. Reverse angle quadruple nosepiece revolves on ball bearing. Double plate mechanical stage size 140mm X 132mm having low positioned co-axial controls. Coarse stroke 37.7mm/rotation, fine division 0.002mm. Cross travel 78mm X.54mm.
Sub - Stage Condenser	Abbe Condenser N.A. 1.25 with adjustable iris diaphragm.
Illumination System	The illuminator incorporated 3W LED lamp and has adjustable brightness.

Binocular Microscope

SPECIFICATIONS

Binocular Observation Head	<ul style="list-style-type: none"> • Siedentopf Observation head inclined at 30° rotatable at 360°. • Diopter adjustment ring on ocular tube (± 5). • Inter-pupillary distance from 55mm to 75mm.
Eyepiece (Anti fungus coated)	<ul style="list-style-type: none"> • Wide Field 10X (paired) F.O.V 20mm.
Objectives	<ul style="list-style-type: none"> • Plan Achromatic 4X • Plan Achromatic 10X • Plan Achromatic 40X(S.L.) • Plan Achromatic 100X Oil(S.L.)
Mechanical Body	<ul style="list-style-type: none"> • Co-axial focusing system. PRE- FOCUSING LEVER & TENSION ADJUSTMENT RING. • The slow motion has 1Div=0.002mm. • Quadruple nosepiece revolves on ball bearing. • Double plate mechanical stage size 140mmX155mm having low positioned co- axial controls on ball bearing • Cross movement 55mm X 75mm.
Sub Stage Condenser	Abbe condenser N.A.1.25 swing out 88lter holder, iris diaphragm.
Illumination System	Built-in-base illumination system with 3W LED bulb and adjustable brightness.
Illumination System	Illuminator system with ultra high brightness 3W LED lamp brightness control knob.



METZ – 5000 BM
PLUS

TRINOCULAR RESEARCH MICROSCOPE WITH INFINITY CORRECTED OPTICS.

SPECIFICATIONS

Magnification	40x to 1000x
Observation	Seidentopf Trinocular Head inclined 30° rotatable at 360° and diopter adjustment ring on ocular tube (+/-5) with interpupillary distance from 48mm to 75mm.
Eye Pieces	(Anti fungus coated) Extra Wide Field 10x (paired) F.O. V 20mm
Objectives	(Infinity Corrected & Anti fungus treated). IOS Plan Achromatic 4x, 10x, 40x (S.L.) & 100x Oil (S.L.)
Mechanical	Co-axial Focusing System. Pre Focusing Lever & Tension Adjustment Ring. Reverse angle quadruple nosepiece revolves on ball bearing. Slot for Polarizer. Double plate mechanical stage size 140mm X 132mm having low positioned co-axial controls on ball bearing guide ways.
Sub - Stage Condenser	Abbe Condenser N.A. 1.25 with adjustable iris diaphragm
Illumination System	Illuminator system with ultra high brightness 3W LED lamp brightness control knob.



**METZ – 5000 TM
(EDGE)**



**METZ – 5000 TM
STAR**

RESEARCH MICROSCOPE

SPECIFICATIONS

Eyeiece	Wide Field 10X (paired) F.D.V 20mm
Objectives	E-Plan Achromatic 4X, 10X, 40X (S.L.), 100X Oil(S.L.).
Mechanical Body	Co-axial focusing system, PRE-FOCUSING LEVER & TENSION ADJUSTMENT RING. The slow motion has 1Div-0.002mm. Quadruple nosepiece revolves on ball bearing. Double plate mechanical stage size 140mm X 132mm having low positioned co-axial controls. Cross movement 76mm X 50mm.
Sub Stage Condenser	Abbe condenser N.A.1.25 swing out filter holder, iris diaphragm.
Illumination System	The built-in-base illumination system with Ultra high brightness single 3W LED cold light source. Brightness control knob
Standard Accessories	Operating manual, dust cover, guarantee card and Styrofoam molded pack.

RESEARCH MICROSCOPE

SPECIFICATIONS

Trinocular Observation	Siedentopf Observation head inclined at 30° rotatable at 360°. Vertical phototube for micro photography. Diopter adjustment ring on ocular tube (±5). Inter-pupillary distance from 48mm to 75mm.
Eyeiece	Extra wide field 10X (paired). F.O.V. 25mm. Ocular dia 30mm.
Objectives	CCIS Plan Achromatic 4X, 10X, 20X(SL), 40X(5L), 100X Oil(SL)
Mechanical Body	Co-axial focusing control with large knob, PRE-FOCUSING LEVER & TENSION ADJUSTMENT RING. Reverse angle sextuple nosepiece revolving on ball bearings. Reckless Mechanical stage size 180mm x 160mm & having low positioned co-axial controls on ball bearing guide ways Fine div 0.001mm, coarse stroke 37.7mm per rotation, Fine stroke 0.1mm/rotation. Moving range 24mm
Sub Stage Condenser	Swing out front lens, abbe condenser N.A. 0.9/1.25, filter holder and iris diaphragm.
Illumination	Kohler illumination system with 3W LED external illuminator, Iris diaphragm on collector lens. Aspherical collectors. Brightness control knob
Standard	12V/100W halogen tungsten bulb, dust cover, guarantee card, blue filter, Operating manual and Styrofoam molded pack



**METZ – 5000 TM
PRO**

BINOCULAR RESEARCH MICROSCOPE

SPECIFICATION

Magnification	40x to 400x.
Observation	Trinocular 1x magnification with interpupillary and diopter adjustment.
Stand	Extra large size rectangular base, heavy & stable with transformer and electrical fitted in side.
Mechanical	Co-axial low drive, triple plate for comfortable and convenient manipulation of slide.
Focusing	Co-axial coarse & fine mechanism system with ball bearing guide ways.
Illumination	Koehler's illumination system 12V-50W Halogen Lamp.
Quadruple Nose Piece	A precision mechanism ensures the accuracy and optical alignment of the system
LWD Objectives	4x, 10x, 20x (SL) & 40x (SL). Anti fungal coated & infinity corrected.
Eye Pieces	10x paired. Extra Wide Field, Anti fungal & Anti reflected.



METZ - 6000 TTCM



**METZ - 6000 TTCM
(STAR)**

TRINOCULAR TISSUE CULTURE MICROSCOPE

SPECIFICATIONS

Trinocular Observation	Siedentopf Observation head inclined at 45°. Diopter adjustment ring on ocular tube. Inter-pupillary distance from 48mm to 75mm.
Eye Piece	Eyepieces EWF 10x (Paired) FOV 18mm.
Objectives	LWD Plan 4x, LWD Plan phase 10x, 20x PH, LWD Plan 40x
Mechanical Body	Quadruple nosepiece. Pre-Focussing Lever & Tension Adjustment Ring Are On Focusing Mechanism. Hard coated mechanical stage is 180mm x 165mm. Movement 50mmX40mm
Illuminator	12V/20W Halogen lamp with spherical collector lens, continuous regulation of the illumination.
Condenser	Long working distance 45mm. Condenser with N.A. 0.35. Field diaphragm, Pull out filter socket.
Filter	Blue, Green, Yellow Glass Filter.
Standard Accessories	Electric Cable, Fuse, Vinyl dust cover, Operating Manual, 12V/20W Halogen bulb, Styro Foam molded pack.

SPECIFICATIONS

Trinocular Observation Head	<ul style="list-style-type: none"> • Siedentopf observation head inclined at 30° rotatable at 360°. • Diopter adjustment ring on ocular tube (± 5). • Interpupillary distance from 52mm to 74mm.
Eyepiece (Anti fungus)	Eyepiece PWF 10X (paired) FOV 22mm. Centering Telescope 10X.
Objectives (LWD APO Plan Infinity Corrected)	<ul style="list-style-type: none"> • LWD Fluor Plan 4X • LWD Plan Phase 10X • LWD Plan Phase 20X • LWD Plan Phase 40x • Phase Annular for 10X, 20X and 40x objectives.
Condenser	4-hole rotating disc phase contrast condenser N.A.0.4, W.D.45mm, It can be up-down adjusting
Mechanical Body	<ul style="list-style-type: none"> • Quintuple nosepiece • Co-axial coarse and fine focusing with large knobs, PRE-FOCUSING LEVER & TENSION. ADJUSTMENT RINGS are on the focusing mechanism. • Hard coated mechanical stage is 214mmX 241mm. • Movement 30mmX75mm. • Culture dish holder: 54mm
Excitation Filters	B (Blue), 460–490 nm (standard) G (Green), 510–550 nm (standard) Red (Texered) 560–595nm
Reflected Light	5W LED fluorescent lamp hours
Transmitted light	5W LED illumination
Standard Accessories	Electric cable, fuse, vinyl dust cover, operating manual, guarantee card, blue filter, power supply for 5W led lamp and Styrofoam molded pack.



METZ – 6000 TTCM FL PRO

SPECIFICATIONS

Eyepiece	WF10/22mm, high eyepoint, dropter adjustable
LWD Infinity Phase Contrast Plan Objectives (Brightfield & phase contrast observation)	<ul style="list-style-type: none"> • LPlanFL PHP 10x/0.25 • LPlanFL, PHP 10x/0.25 • LPlanFL PHP20x/0.45 • LPlanFL PHP40X/0.65
Annular Spot for Phase Contrast Objective	5x/10/20/40×
Siedentopf Trinocular Head	Inclined 45°, interpupillary distance: 48–76mm
Light distribution	100:0 (100% for eyepiece or photography port)
Nosepiece	Quintuple
Mechanical Stage	Stage size: XY: 210×241mm. Round slide size: ϕ 110mm
Attached mechanical stage	Available for 96 holes plate, moving range XXY: 128×80mm
Glass holder	Culture Dish Holder 54mm
Condenser	Long working distance, quickly detachable, N.A.0.3. Working distance: 72mm (with condenser), 195mm (without condenser).
Koehler Illumination	SW LED lamp input voltage: 100V~240V
Filter	blue (ϕ 34mm)
EPI Fluorescence device	Epi fluorescence media unit, field diaphragm, center adjustable. 5W LED lamp (input voltage: 100V~240V) Blue fluorescence filter Exciter 420–480nm Green fluorescence filter Exciter 525–555nm R(Texated) fluorescence filter Exciter 540–580nm



METZ 6000 TTCM (FL MAX)

DISSECTING STEREO BINOCULAR MICROSCOPE

SPECIFICATIONS

Magnification	20x.
Observation	Binocular inclined at 45°, Rotatable 360°.
Stand	Flat duly balanced with milky glass plate and clips for specimens.
Focusing	Rack & Pinion with extra – large knobs.
Objectives	Fixed 2x.
Eye Pieces	Wide field 10x



METZ – 210



SPECIFICATIONS

Magnification	20x – 40x
Observation	Binocular inclined at 45°, Rotatable 360°.
Stand	Flat duly balanced with milky glass plate and clips for specimens.
Focusing	Rack & Pinion with extra – large knobs.
Objectives	2x and 4x mounted on inter changeable slide.
Eye Pieces	Wide field 10x

METZ – 211

Magnification	20x – 40x
Observation	Binocular inclined at 45°, Rotatable 360°.
Stand	Heavy and stable construction.
Focusing	Rack & Pinion with extra – large Knobs and slip clutch Mechanism with safety stop.
Illumination	Stand provides both incident and transmitted light with all electrical and transformers built inside base having 6V – 20W lamps.
Objectives	2x and 4x paired mounted on revolving turret, changing form low to high by simple rotation and no exchange slides.
Eye Pieces	Wide field 10x



METZ – 214

BINOCULAR STEREO ZOOM MICROSCOPE

SPECIFICATION

Magnification	7 to 45x (Standard) can be increased to 180x depending on different combination of eye piece & Auxiliary used.
Observation Head	Binocular, 1x magnification with interpupillary and diopter adjustment.
Stand	Pillar plain stand, sturdy & durable.
Focusing	Rack & pinion arrangement coarse focusing with pillar clamp. Coarse adjustment app. 50mm.
Illumination	Built in base LED 3W – 3V transmitted & reflected light with light intensity control system.
Objectives	Zoom 0.7 to 4.5x.
Eye Pieces	10x paired. Extra Wide Field, Anti –Fungal & Anti reflected.



METZ – 7000 BZB

TRINOCULAR STEREO ZOOM MICROSCOPE

SPECIFICATION

Magnification Range	7 to 45x (Standard) can be increased to 180x depending on different combination of eye piece & Auxiliary used.
Observation Head	Trinocular, 1x magnification with interpupillary and diopter adjustment.
Stand	Pillar plain stand, sturdy & durable.
Focusing	Rack & pinion arrangement coarse focusing with pillar clamp. Coarse adjustment app. 50mm.
Illumination	Built in base LED 3W – 3V transmitted & reflected light with light intensity control system.
Objectives	Zoom 0.7 to 4.5x.
Eye Pieces	10x paired. Extra Wide Field, Anti –Fungal & Anti reflected.



METZ – 7000 TZM

TRINOCULAR STEREO ZOOM MICROSCOPE

SPECIFICATION

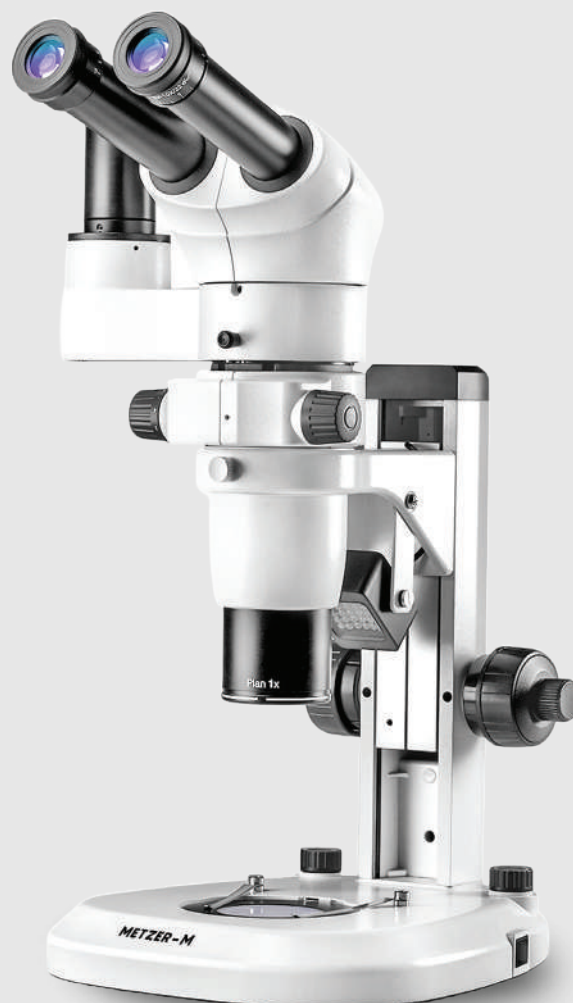
Magnification	8x – 50x
Zooming Range & Ratio	Zoom 0.8x to 5.0x with magnification ratio of 1:6.3.
Trinocular Observation	<ul style="list-style-type: none"> • Observation head inclined at 45° rotatable at 360°. • Vertical phototube for micro photography. • Diopter adjustment ring on ocular tube (+5). • Inter – pupillary distance from 52mm to 76mm.
Eye Piece	Extra Wide Field 10x (Paired) F.O.V. 22mm.
Working Distance	115mm.
Mechanical Body	<ul style="list-style-type: none"> • Track stand with large base • Lateral zoom control movement. • Reflected & transmitted LED illuminator. • Clip for holding specimen. • Base size is 285mm x 238mm.
Illumination System	<ul style="list-style-type: none"> • Incident and transmitted light systems with LED lamps. • Both lights are regulated with power supply and has separate brightness controls.



**METZ – 7000 TZM
SUPREME**

TRINOCULAR STEREO ZOOM MICROSCOPE

METZ – 7000 TM ELITE



SPECIFICATION

Magnification	8x – 50x
Zooming Range & Ratio	Zoom 0.8x to 8x with magnification ratio of 1:10.
Trinocular Observation	<ul style="list-style-type: none">• Observation head inclined at 20°.• Diopter adjustment ring on both ocular tube (+5).• Inter – pupillary distance from 55mm to 75mm.• Lateral tube for digital camera.
Eye Piece	<ul style="list-style-type: none">• Focusable extra wide field.• 10x (Paired) F.O.V. 22mm.
Working Distance	78mm.
Mechanical Body	<ul style="list-style-type: none">• Track stand with co – axial focusing mechanism and large fan type base.• Lateral zoom control movement.• Clip for holding specimen.• Base size is 270 x 250mm.
Illumination System	<ul style="list-style-type: none">• Incident and transmitted light systems with LED lamps.• Both lights are regulated with power supply and has separate brightness controls.

TRINOCULAR FLUORESCENCE MICROSCOPE

SPECIFICATION

Trinocular Observation Head

- Siedentopf observation head inclined at 30° rotatable at 360°.
- Light path selector lever to direct either full light to observation head or 80% to vertical.
- Vertical phototube for digital photography.
- Inter-pupillary distance from 50mm to 75mm.
- Diopter adjustment ring on ocular tube.

Eyepiece

- Wide field eyepiece 10X (paired) FOV 22mm.

Objectives (Anti fungus coated)

- Infinity objective 4X.
- Infinity objective phase 10X, 40X (S.L.) and Oil 100X (S.L.)

Mechanical Body

- Co-axial focusing system with large knobs, PRE-FOCUSING LEVER & TENSION ADJUSTMENT RING. Fine focusing scale value 0.002mm.
- Reverse angle quintuple nosepiece on ball bearing.
- Mechanical stage is 140mmX160mm. Moving range 80mm X 50mm
- The mechanical stage has low positioned co-axial controls on ball bearing guide ways

Condenser

- N.A 1.25 Abbe condenser with iris diaphragm and filters.

Excitation Filters

- B Excitation (400–490nm) standard
- G Excitation (510–550nm) standard

Light Source

- Transmitted light source: 3W LED.
- Epi-Fluorescence light source: 100W high pressure mercury lamp.

Standard Accessories

- 100W high pressure mercury lamp. Styrofoam molded pack.



METZ - 8000 FL STAR

TRINOCULAR FLUORESCENCE STEREO ZOOM MICROSCOPE

SPECIFICATION

Trinocular Observation Head

- Observation head inclined at 20°.
- Diopter adjustment ring on both ocular tube.
- Inter-pupillary distance from 57mm to 75mm.
- Lateral tube for digital camera.
- 8" Inch LCD Screen 360 degree Horizontal and 90° vertical rotatable with android operating system.
- Built in 5.0 camera with HDMI, USB 2.0 Port

Eyepiece

- Focusable extra Wide field 10X (paired) F.O.V. 22mm.

Zooming Range & Ratio

- Zoom 0.8X to 8X with magnification ratio of 1:10.
- Plan achromatic objective 1X.

Magnification Range

- 8 X to 50X.

Working DISTANCE

- 78mm.

Mechanical Body

- Track stand with co-axial focusing mechanism.
- Incident and transmitted light system with LED lamp.
- The system regulated with transformer has intensity control knob.
- On/off switch to provide flexibility to use either both light or any of them.
- Clip for holding specimen.
- Lateral zoom control movement.



METZ - 8000 FL ZOOM

FLUORESCENCE UPRIGHT RESEARCH MICROSCOPE

SPECIFICATION

Trinocular Observation Head

- Siedentopf observation head inclined at 30° rotatable at 360°.
- Light path selector lever to direct either full light to observation head or 80% to vertical.
- Vertical phototube for digital camera.
- Diopter adjustment ring on ocular tube(±5).
- Inter-pupillary distance from 48mm to 75mm.

Eyepiece

- Wide field eyepiece 10X (paired) F.O.V. 25mm.

Objectives (Anti fungus coated)

- FLUOR Objective 2X, 4X, 10X, 20X, 40X(SL) and 100X(SL) Oil

Mechanical Body

- Co-axial focusing system with large knobs, PRE-FOCUSING LEVER & TENSION ADJUSTMENT RING.
- Reverse angle sextuple nosepiece on ball bearing. Slot for Polarizer and DIC.
- Double Plate rackless mechanical stage is 187mmX167mm.
- The mechanical stage has low positioned co-axial controls on ball bearing guide ways.
- Fine division 0.001mm coarse, per rotation, fine stroke 0.1mm per rotation, moving range 24mm

Substage Condenser

- Swing out front lens, N.A. 0.9/1.25, filter holder and iris diaphragm.

Excitation Filters (Optional)

- B Excitation (400–490nm) standard
- G Excitation (510–550nm) standard



METZ – 8000 FL MAX

Light Source

- Transmitted Kohler light source: 3W LED bulb.
- Epi-Fluorescence light source: 3W high brightness LED lamps. Enable selecting monochromatic or dichromatic LED for light source.

Standard Accessories

- 3W LED, operating manual, dust cover, fuse, guarantee card, blue filter, and styrofoam molded pack

FLUORESCENCE UPRIGHT RESEARCH MICROSCOPE

SPECIFICATION

Substage Condenser

- Swing out front lens, N.A. 0.9/1.25, filter holder and iris diaphragm.

Excitation Filters (Optional)

- B Excitation (400–490nm) standard
- G Excitation (510–550nm) standard
- UV Excitation (330–385nm) standard
- V Excitation (400–410nm) standard

Light Source

- Transmitted Kohler light source: 3W LED or 12V/100W tungsten halogen bulb.
- Epi-Fluorescence light source: 100W high pressure mercury lamp.

Standard Accessories

- 3W LED/12V/100W Halogen bulb, operating manual, dust cover, fuse, guarantee card, blue filter, power supply for 100W mercury lamp and styrofoam molded pack.

Trinocular Observation Head

- Siedentopf observation head inclined at 30° rotatable at 360°.
- Light path selector lever to direct either full light to observation head or 80% to vertical.
- Vertical phototube for digital camera.
- Diopter adjustment ring on ocular tube(±5).
- Inter-pupillary distance from 48mm to 75mm.

Eyepiece

- Wide field eyepiece 10X (paired) F.O.V. 25mm.

Objectives (Anti fungus coated)

- Plan FLUOR 2X, 4X, 10X, 20X, 40X(SL) and 100X(SL) Oil.



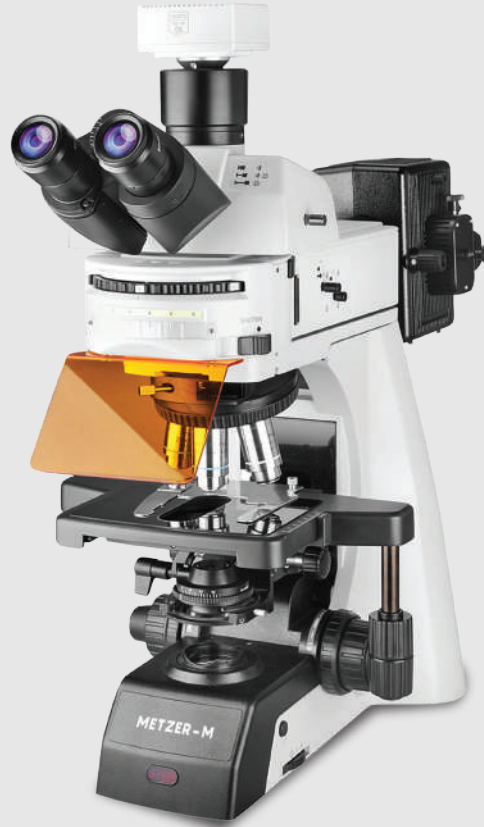
METZ – 8000 FL PRO

Mechanical Body

- Co-axial focusing system with large knobs, pre-focusing lever & tension adjustment ring.
- Reverse angle sextuple nosepiece on ball bearing. Slot for Polarizer and DIC
- Double Plate rackless mechanical stage is 187mmX167mm.
- The mechanical stage has low positioned co-axial controls on ball bearing guide ways.
- Fine division 0.001mm coarse, per rotation, fine stroke 0.1mm per rotation, moving range 24mm

FLUORESCENCE UPRIGHT RESEARCH MICROSCOPE

METZ – 8000 FL EDGE



SPECIFICATION

Trinocular Observation Head

- Siedentopf observation head inclined at 30° rotatable at 360°.
- Vertical phototube for micro photography.
- Diopter adjustment ring on ocular tube(±5).
- Inter-pupillary distance from 48mm to 75mm.
- Swing out front lens, abbe condenser
- N.A. 0.9/0.25, filter holder & iris diaphragm

Eyepiece (Anti fungus)

- 10X/26.5 mm with diopter adjustment.

Objectives (Anti fungus coated)

- Plan Achromatic 2X, 4X, 10X, 20X, 40X and 100X.

Mechanical Body

- Co-axial focusing system with large knobs, pre-focusing lever & tension adjustment ring.
- Reverse angle sextuple nosepiece on ball bearing.
- Double Plate rackless Mechanical stage is 187mmX168mm Slot for Polarizer and DIC.
- The mechanical stage has low positioned co-axial controls on ball bearing guide ways.
- Fine division 0.001mm coarse, per rotation, fine stroke 0.1mm per rotation, moving range: 80mm X 55mm.
- Built in transmitted filter LBD/ND6/ND25.

Excitation Filters (Optional)

- B Excitation (400–490nm) standard
- G Excitation (510–550nm) standard
- UV Excitation (330–385nm) standard
- V Excitation (400–410nm) standard

Reflected Illumination System

- Sextuple reflected fluorescence illuminator with iris field diaphragm and aperture diaphragm, central adjustable with filter slot and polarizing slot, with fluorescence filter (B/G/UV/V)
- 100W Mercury lamp house, filament centre and focus adjustable with reflected mirror, centre and focus adjustable
- Digital power controller, wide voltage 100–240 VAC
- Imported OSRAM 100W Mercury lamp.

Transmitted Illuminator

- 12V/100W halogen lamp house for transmitted light, centre pre-set, intensity adjustable.

Standard Accessories

- 12V/100W halogen tungsten bulb, Power cord and cedar oil.

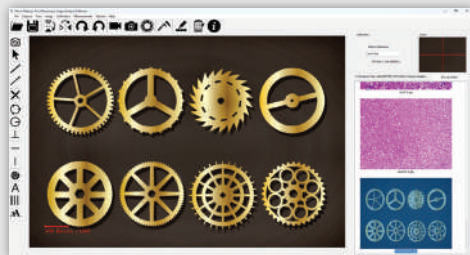
FLUORESCENCE UPRIGHT RESEARCH MICROSCOPE

METZ – 888 PRO



TECHNICAL SPECIFICATION

Eyeiece	WF10X/20mm (adjustable), WF10X/20mm (adjustable, reticule 0.1mm)
Professional Polarizing Seidentopf Trinocular Head	Inclined 30°, Rotatable, 360°, Interpupillary Distance : 48mm ~ 76mm
Light distribution (both)	100: 0 (100% for eyepiece) 80:20 (80% for trinocular head and 20% for eyepiece)
Non-stress Infinity Plan Objective (Transmitting)	PLAN 4X/0.10 W.D.= 12.1mm PLAN 10X/0.25 W.D.= 4.64mm PLAN 20X/0.40(S) W.D.=2.41mm PLAN 40X/0.66(S) W.D.=0.65mm
Non-stress LWD Infinity Plan Objective(Reflecting)	Semi Apochromatic Objective LMPlan FL 50×/0.75 W.D.= 4.25mm Semi Apochromatic Objective LMPlan FL100X/0.85(dry) WD=3.00mm
Nosepiece	Quintuple (center adjustable)
POL Media	Analyzer rotatable 360°, module type, can be locked Bertrand lens, Built In, focus adjustable
Slip	λ slip (First Class Red) $\lambda/4$ slip Quartz wedge (I - IV)
Revolving Round Stage	Rotatable 360°, center adjustable, can be locked. division 1°, vernier division 6'. Diameter Φ 174mm
Swing-out Condenser	N.A.0.9/0.13, polarizing unit (with scale, rotatable 360°,can be locked)
Focusing Unit	Coaxial Coarse and Fine Focusing Unit Coarse stroke 25mm Fine stroke per rotation:0.2mm, fine division 2 μ m
Transmitting	12V/30W Halogen lamp (Input voltage:100V~240V)
Reflecting Illumination	12V/50W Halogen lamp (Input voltage:100V~240V)



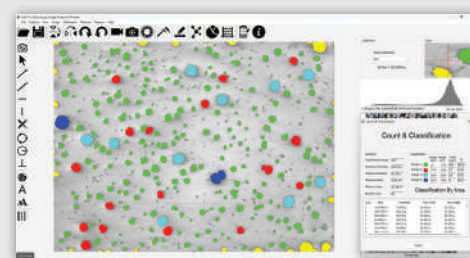
SPECIFICATIONS

- **Measurements:** Spatial calibration, Line Measurements for Distance, Length, Width, Perimeter, Angle. Three point radius. Area by enclosed line controlled by four arrow keys available on keyboard arrows with zoomed preview. Measurements can be performed on live images.
- **Report Generation:** Direct printout with original image processed image & tabular results or export to MS office or Excel for further modification. Calibration scale included.

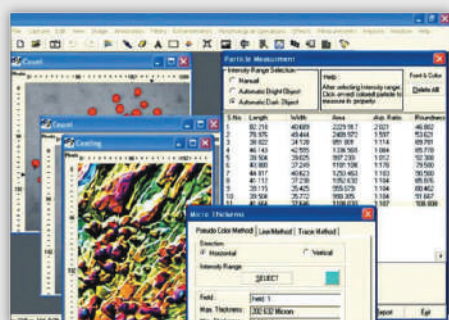
METZER-M MICRO-MEASURE

SPECIFICATIONS

- **Live Measurements:** Distance, Length, Width, Perimeter, Angle, Three Point Radius. Accuracy – 1 micron.
- **Count & Classification:** Identification of Objects in an image, count them, obtain Several features Measurements. Objects identification by user or automatically. User Defined classification on basis of Size or intensity
- **Particle Size Analysis:** Various calculation & measurements available for selected Particle are as Follows: Dimensions, Area, Perimeter, Ferite Length, Min/Max Radius, Thread Length, Thread Width, Fiber Length, Fiber Width.
- **Densitometry Analysis:** Manual, Auto bright and auto dark methods to identify Intensity range defined object to be measured. Roundness, Shape Orientation, Elongation, Equal Circular Di – Ameter, Equal Sphere Volume.
- **Report Generation:** Direct printout with original image processed image & Tabular Results or Export To MS Office or Excel for further modification.



METZER –M LIFE PRO



SPECIFICATIONS

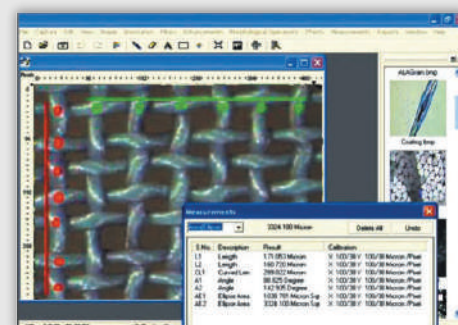
Measurements : The software is useful to measure and analyse the particle size, particles shape, particle count, foreign particle detection, particle structure, homogeneity, surface, coatings thickness. For spherical particles (which are rarely uncounted in pharmaceutical powders) the diameters are sufficient to describe the particle size. For non – spherical particles, feret's diameter, Particle orientation, Particle shape, elongation, convexity, circularity, circle equivalent diameter are measured. This software is also useful to study the polarizing effects which study the cross section through pharmaceutical tablets by preparing thin-sections on slide with UV curing adhesive for final polishing.

METZER-M PHARMA PRO

SPECIFICATION

Measurements :

- This Software useful for micro measurement of fiber, yarn, threads, textile material, non-woven fabrics etc.
- Micro analysis of yarns and fiber sections.
- Measurements of length, surfaces, perimeters, angels, distance between two points or lines or objects.
- Fast and easy way the fitness analysis of single fiber.
- Analyze the compactness of non-woven fabrics.



METZER-M TEXTILE PRO



METZ – 5.0 PRO

SPECIFICATIONS

- 5.0 megapixels with progressive scanning CMOS image sensor.
- Sensor: 1/ 2.5" CMOS, MICRON (MT9P031)
- Resolution: 2592×1944(8bit)
- Pixels Size: 2.2µm×2.2µm
- Frame Rate: 8fps@2592×1944, 30fps@640 ×480
- Support still image capture(JPG,BMP)
- Data Interface: USB2.0 (480 Mbit / sec)

SPECIFICATIONS

- Sensor: 1/ 2.5" CMOS, SONY (ICX252)
- 10.0 megapixels with progressive scanning
- Data Interface: USB 3.0 (480 Mbit / sec)
- Resolution: 2592×1944(8bit)
- Pixels Size: 2.2µm×2.2µm
- Frame Rate: 97.5fps @648x486 , 49.5fps @1298x972, 15.5fps @2592x1944
- Support still image capture(JPG,BMP)



METZ 10.0 PRO



METZ 4K Ultra HD

Specifications

- Sensor size: Sensor 1/1.9" CMOS SONY
- Pixels Size: 1.85µm × 1.85µm
- Frame rate: 30 FPS
- Resolution: 3840 × 2160
- Gain Control: Support
- Pixel Depth: 12bit
- 10.0 megapixel with progressive scanning
- Definition: 4K UHD
- Support: USB / HDMI
- Exposure: Manual/AUTO
- Photo & Video: Support
- Camera adapter: C-mount
- Power supply: 12V 2A

Specifications

- Sensor – 5MP color CMOS Camera sensor, Size 1/2.5 inch (4:3)
- Effective Resolution – 2592Horizontal x 1944Vertical, 10.0 megapixel
- Pixels Size – 2.2µm x 2.2µm
- Color Depth – 12-bit, on-chip
- SD Card – Support
- Shutter Type – Electronic
- Exposure – Auto Exposure
- Video and Frame rate – 640x480 @ 30fps, 1280x720@15fps
- Software Function – Image, Video
- Optional Output – HDMI
- Power Supply – DC 5V 2A

Features

- M- DIGITAL TABLET is the smart digital microscope tablet camera equipped with 5MP color CMOS Camera and 9.7 Inches Tablet.
- It is developed specifically for microscopy applications.



M-DIGITAL TABLET

METZER – M

HIGH-TECH OPTICAL INSTRUMENTS

METZER OPTICAL INSTRUMENTS PVT. LTD.
C-21, GURU NANAK NAGAR, JUNCTION ROAD, MATHURA – 281001
NOIDA | MATHURA | JAIPUR

Dealer:
